



Studio Asselberghs
Frédéric Dehaen

ASS-SEL-BERGH-S-
FRÉ-DÉ-RI-C-DE-HA-EN

la forma dell'idea

24

la forma dell'idea

24 *the shape of the idea*

Cover photo: Studio Asselberghs - Frédéric Dehaen



© denise and beppe berna
2024, bologna, italy

all ... by
beppe berna





Fiera Bergamo
Via Lunga, Bergamo

Stand n. 9
Padiglione A

January 12 – 21, 2024

works



Dan / Wé

164Z

Anthropomorphic mask
with a highly expressionist
plastic shape.

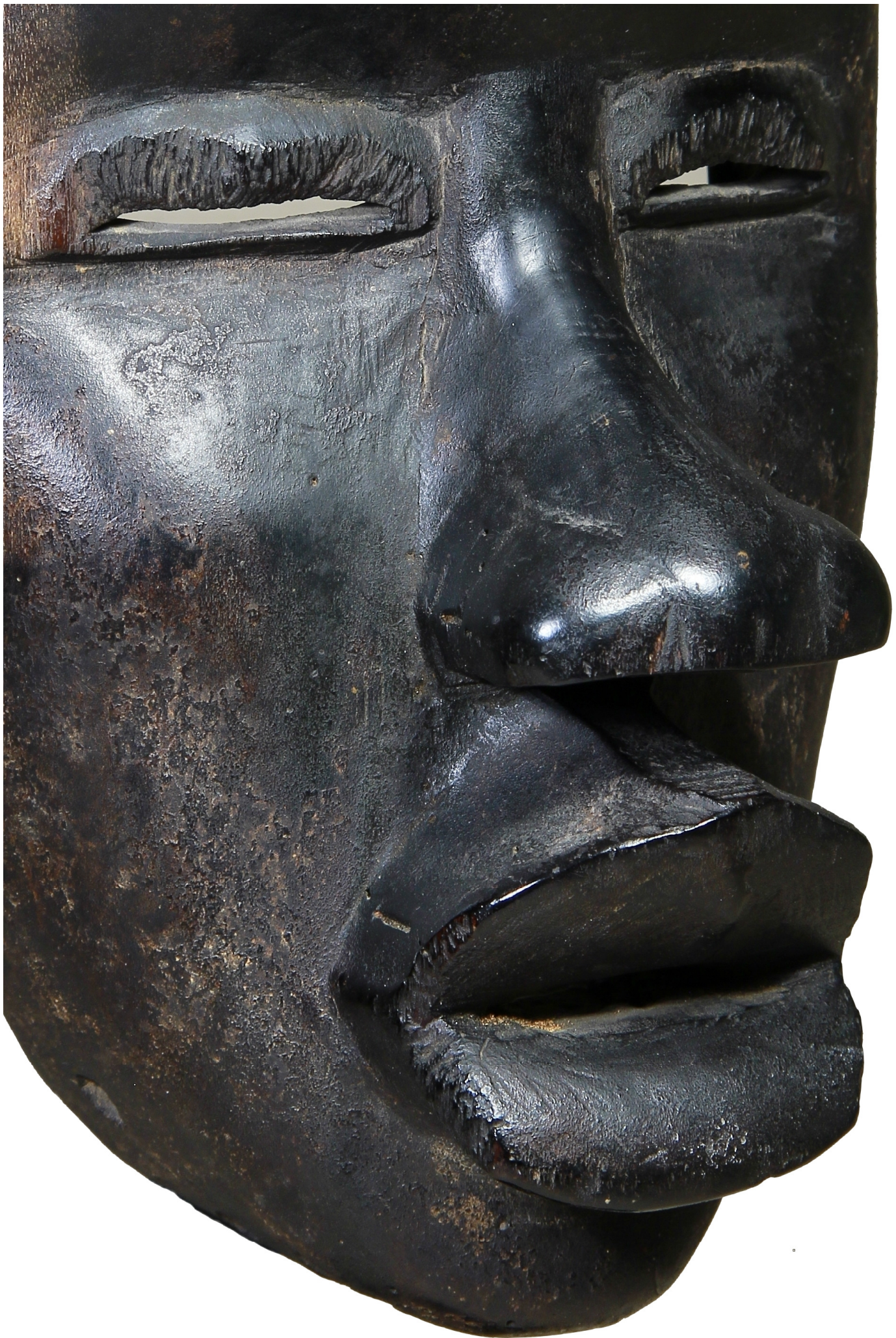
H. cm. 25

*Yves Develon,
Paris. (between
1976 and 1980).
Sotheby's, London,
1987.*

*Loudmer Poulain,
Paris, "Arts
Primitifs", 1989.*

*Published by
Nadyne de
Meyere in "Les
Expositions", Arts
d'Afrique Noire",
No.41, 1982.*





Djennenké, Pre-Dogon

163Z

Human figure evoking the **Nommo** celebrated through the manifestation of his androgyny.

"Masters of the prominent beards"

(Beppe Berna)

1318 - 1425 AD circa.
Radiocarbon C14 test

H. cm. 41

*Issaka Zango (1949/1987),
New York.
Spanish private collection.*











Popondetta, Oro Province, PNG

163R

Tapa, bark beaten and painted with traditional motifs.

Early 20th century, circa 1920s/1930s.

Cm. 148 x 103.

Private English collection.

Galerie Valluet Ferrandin, Paris.



Bombou-Toro, Dogon

135Z

Rare representation of
maternity.

1726-1784 AD

C14 Radiocarbon Test.

H. cm. 26,5

*Patrick van de Velde, Belgium,
1980's.*

French private collection.

Galerie Lucas Ratton, Paris.

Private collection, Paris.









Yaka

153X [413]

Khosi, magical figure.

H. cm. 18,5.

*Probably ex collection
of a German museum.*

*Gigi Pezzoli Collection, Milan.
Denise and Beppe Berna,
Bologna, 1984.
Private collection, Milan.*





Djennenké, Pre-Dogon

159Z

Very rare 'fetish' used in the
grattage rituel practices.

14th / 17th century (on stylistic
basis).

H. cm. 30,5

*Private collection, Brussels.
By family descent.*











Baule

125Z

Asie usu, "génie de la brousse" requested by the diviner in the most beautiful human form.

"Master of Beaugé"
(Beppe Berna).

Early 20th century.

H. cm. 43





Bombou-Toro, Dogon

166Z

The ancestral mother.

17th / 18th century AD.
C14 Radiocarbon Test

H. cm. 40

*Private collection, Brussels.
By family descent.
Frank Van Craen, Brussels.*





Ph. Valentin
Clavairolles







Bombou-Toro, Dogon

151Z

19th century or earlier.

Extremely rare female
altar-statue for the
protection of women.

H. cm. 24,5

*Pierre Langlois, 1950's.
Thérèse and Edward Klejman,
Paris.*







Chokwe

165Z

Unpublished
masterpiece of
Chokwe art.

Pwo, mask, female
ancestral spirit.

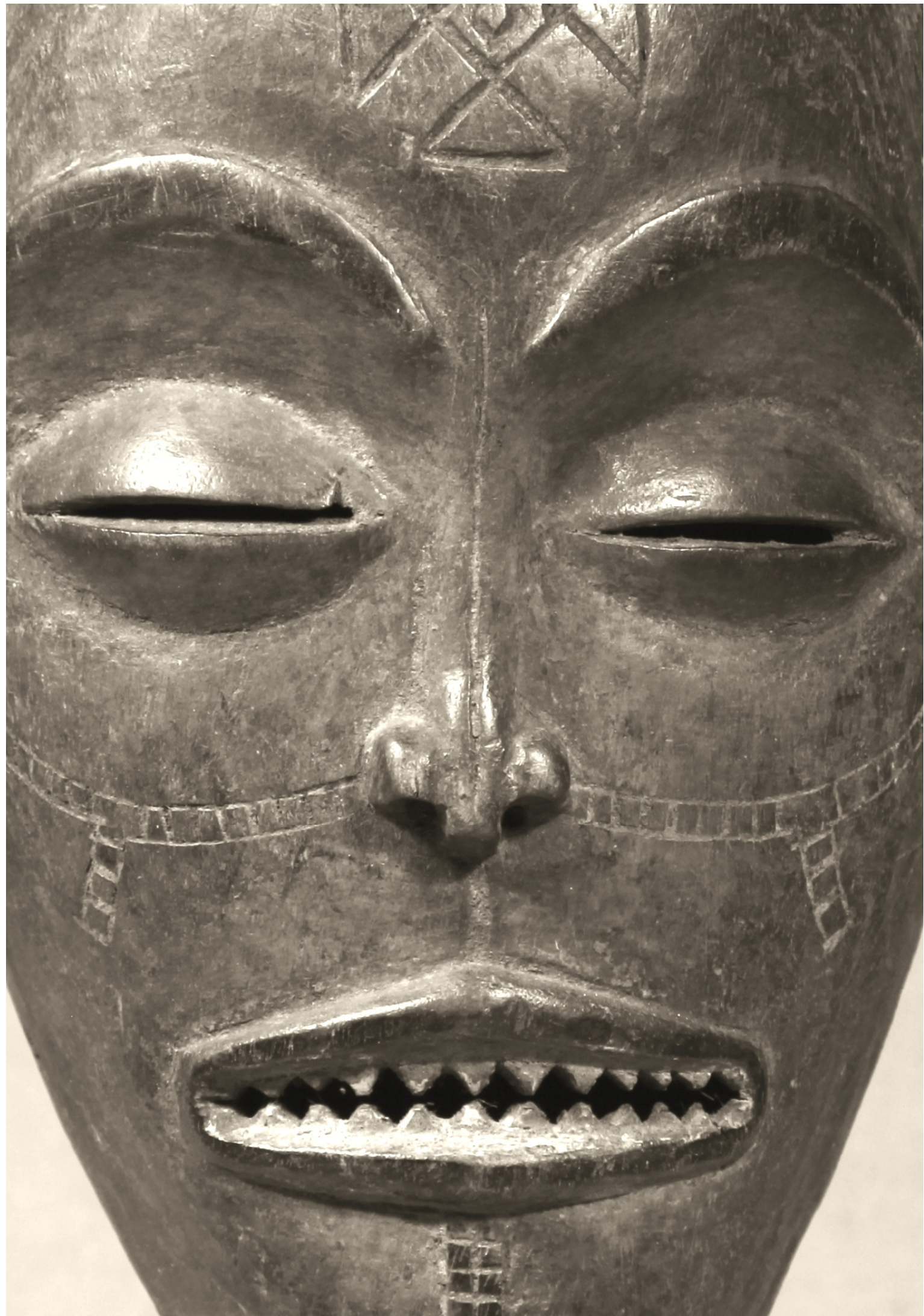
Late 19th century.

H. cm. 22

*Old colonial collection,
Hanover.*

*By family descent.
Private collection,
Gelsenkirchen.*







Dogon

108X

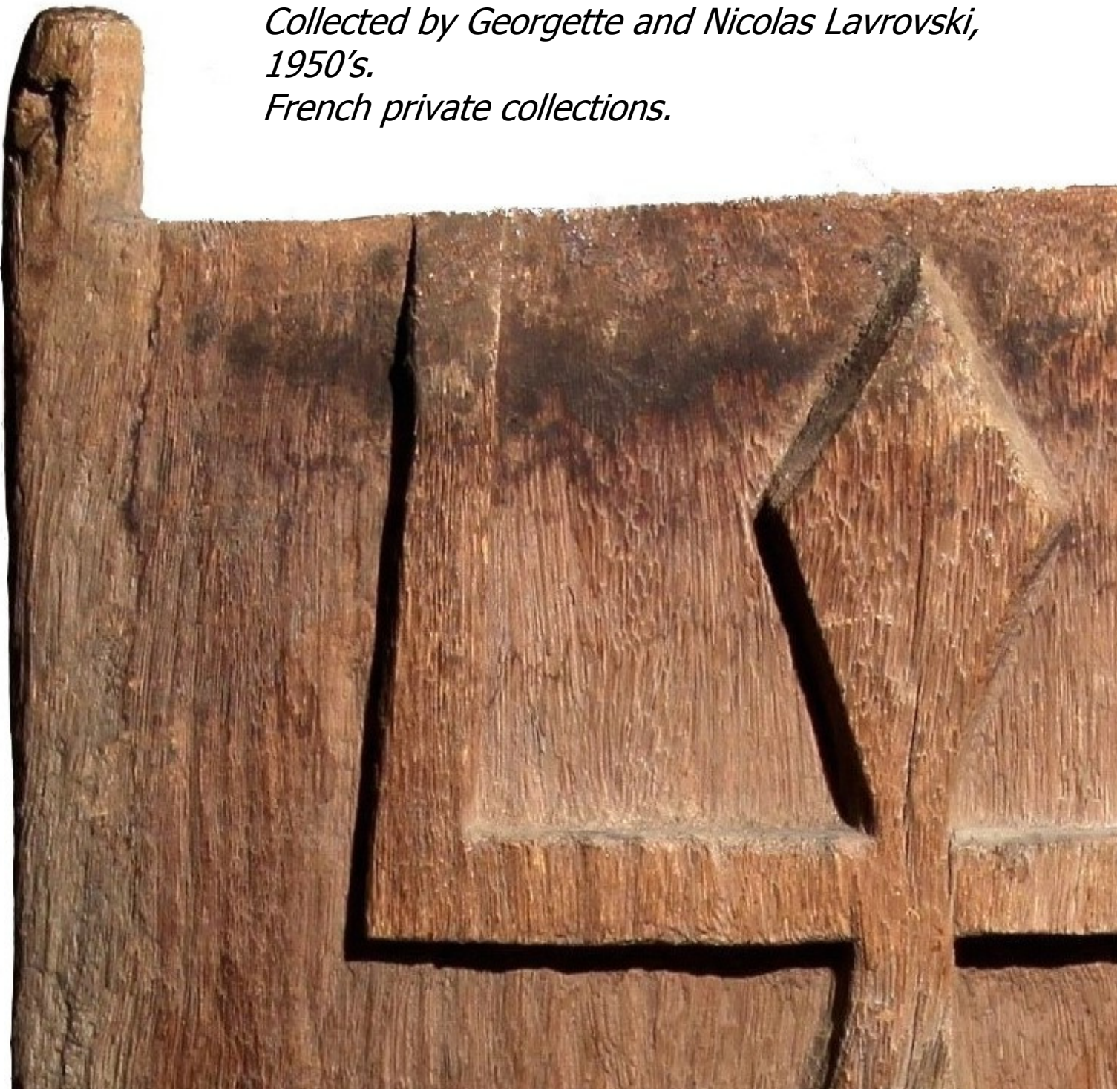
Door of the granary-sanctuary of the *Hogon* (religious leader).

In the centre *Nay*, the lizard (supreme fertility).

Cm. 40 x 62

Collected by Georgette and Nicolas Lavrovski, 1950's.

French private collections.







Baulé

126Z

Blolo bian, the groom of
the afterlife.

Late 19th / early 20th
century.

H. cm. 32

*Helmut Zake (1918 – 1995),
Heidelberg.
Adrian Schlag, Brussels.*

*This masterful male figure
constitutes, on a formal
level, a unicum of archaic
baulé production.*





Bombou-Toro, Dogon

146Y

Sculpture depicting the
Nommo.

H. cm. 30

*Old French collection.
Olivier Castellano, Paris.
Belgian private collection.
Joaquin Pecci, Brussels.*









la forma dell'idea

24

the shape of the idea

... for more information: berna@debberna.it



Denise e Beppe Berna

arte tribale - arte archeologica
tribal art - ancient art

Via Borgo S. Pietro 43 - 40126 Bologna, Italy

Phone +39 051 253175
+39 3498729802

su appuntamento - by appointment only